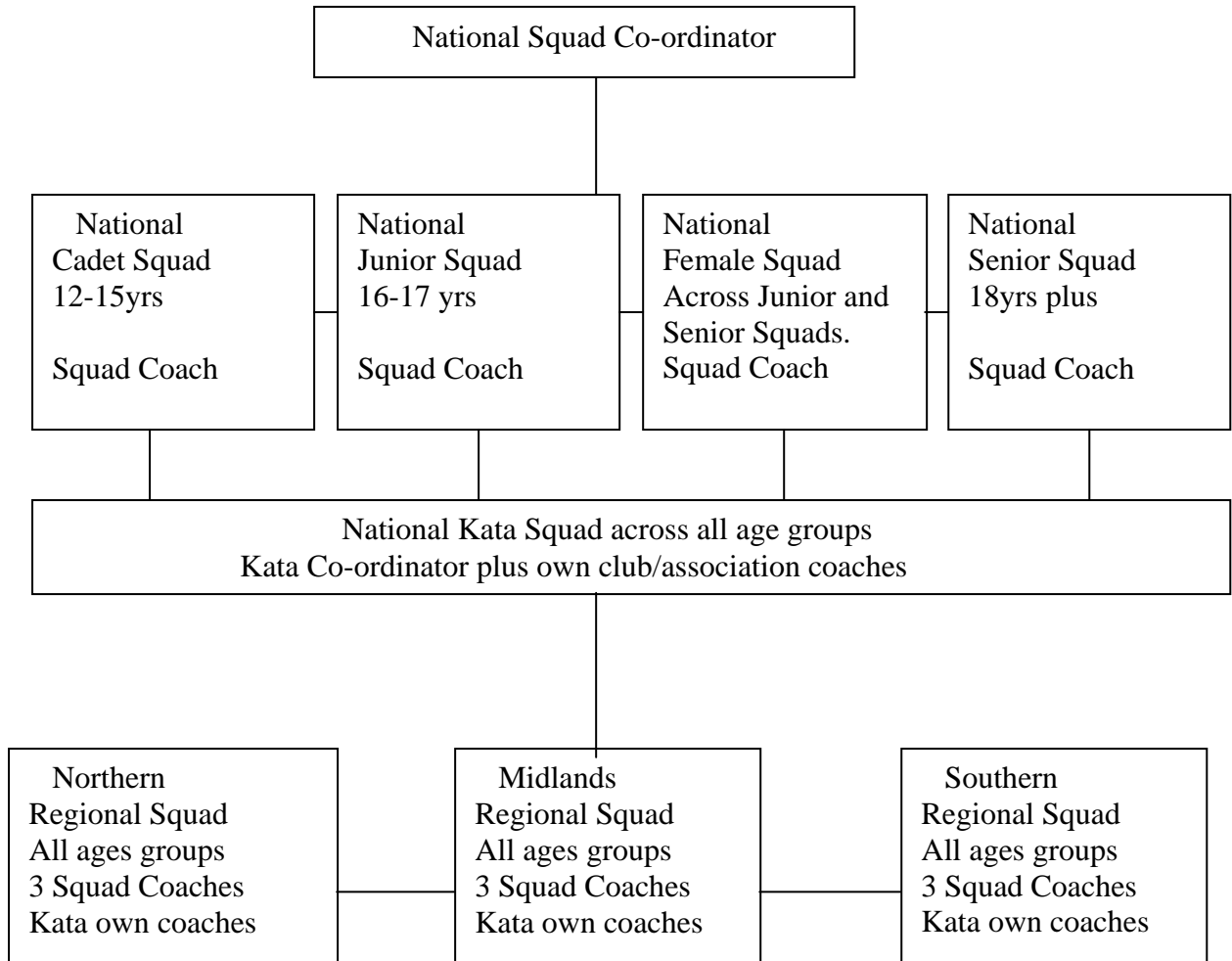


KarateSport England Squad Structure
 (Proposed squad structure for discussion and debate)



1. This Squad structure is in line with WKF age groups schedule for introduction in 2009 with World Championships for 14/15 year olds to be known as cadets.
2. Regional Squads to follow successful format that has already been in place.
3. Athletes wishing to get into the National Squads must firstly come through the regional squad structure.
4. Debriefing compulsory after all major representative championships.
5. A competition Rules advisor to allocated to representative squads to aid them in appeals procedure etc.
6. Introduction of and International Selection Panel.
7. This squad structure to be used in conjunction with the Ranking System from the competition in the process of selections.